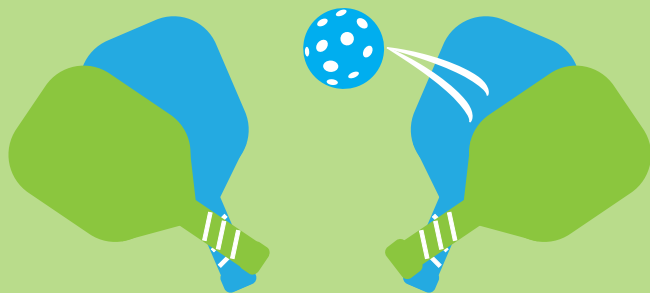


# SPONSOR A COURT NOW!

A BRASS PLAQUE ENGRAVED WITH YOUR CORPORATE, BUSINESS, OR LOVED ONE'S NAME WILL BE MOUNTED ON THE GATE ENTERING COURT

## NAME THE COMPLEX

60% OF TOTAL FACILITY COST



~~\$7,500~~ CHAMPIONSHIP COURT  
(JUST TWO AVAILABLE)

\$6,000 NAME A COURT  
(TWELVE AVAILABLE)

\$4,000 DRINKING FOUNTAIN

~~\$4,000~~ FLAG POLE

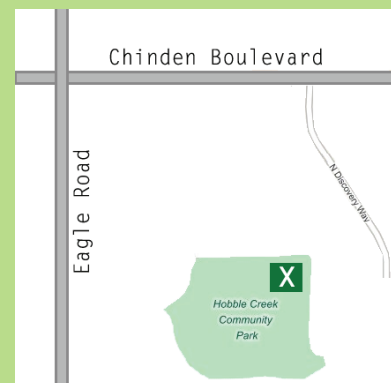
DONATIONS ARE TAX DEDUCTIBLE UNDER IRS CODE 501 (c) (3) - #47-3016164.

## PICKLEBALL - CREATING MILES OF SMILES FOR THE TREASURE VALLEY.

THE BOISE PARKS AND RECREATION DEPARTMENT HAS APPROVED A COMPLEX OF 12 PERMANENT, DEDICATED PICKLEBALL COURTS AND TWO DUAL PURPOSE TENNIS/PICKLEBALL COURTS AT HOBBLE CREEK COMMUNITY PARK.

THE LOCATION, BEHIND THE BOISE AQUATICS CENTER AND THE WEST FAMILY YMCA, IS IDEAL.

THE COMPLEX WILL BE FREE AND OPEN TO ALL AGES YEAR-ROUND. IT WILL BE THE LARGEST PICKLEBALL FACILITY IN THE STATE, DESIGNED TO HOST SPECIAL EVENTS, SUCH AS SENIOR GAMES AND USA PICKLEBALL ASSOCIATION SANCTIONED TOURNAMENTS.



### PLEASE MAKE CHECKS PAYABLE TO:

CITY OF BOISE HERITAGE FUND  
MEMO: HOBBLE CREEK PICKLEBALL

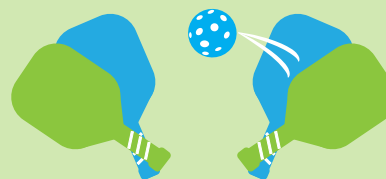
### PLEASE MAIL CHECKS TO:

BOISE PARKS AND RECREATION  
ATTN: LYNETTE GOULD  
1104 ROYAL BOULEVARD  
BOISE, ID 83706

### DONATE ONLINE AT:

[HTTP://PARKS.CITYOFBOISE.ORG/PARKS-LOCATIONS/PICKLEBALL](http://parks.cityofboise.org/parks-locations/pickleball)  
SELECT DONATE NOW AND PRINT A RECEIPT FOR YOUR RECORDS

DONATIONS ARE TAX DEDUCTIBLE UNDER IRS CODE 501 (c) (3) - #47-3016164.



### QUESTIONS?

JOHN SWEETING  
208.286.4478

CARSON SPENCER  
208.866.8832