

Boise Pickleball Parks

Compiled by Thomas Snuggs

tsnuggs@gmail.com

July 31, 2022

Table of Contents

Summary	3
Pickleball Court Type Parks List	4
Baggley Park	5
Boise Hills Park	7
Castle Hills Park	9
Cypress Park	11
Eagle Rock Park	12
Fairview Park.....	14
Helen B. Lowder Park.....	16
Hobble Creek Park	18
Manitou Park.....	20
Mountain View Park.....	24
Optimist Youth Sports Complex.....	27
Peppermint Park.....	30
Phillippi Park	33
Shoshone Park	37
Terry Day Park.....	41
Willow Lane Park.....	43

Summary

Boise Pickleball Courts			
	Dedicated Pickleball	Tennis with lines for PB	Bring your own net courts
Total	22	13	18
*Unusable	0	4	10
Total Usable	22	9	8

*Note: Unusable due to poor surface conditions. Hobble Creek 'Bring your own net courts' can only be used by Boise City sanctioned events. These are not counted as usable.

There are several courts that have very poor surface conditions; cracks, faded lines, or other defects. The following parks have courts in need of much repair:

- [Castle Hills Park](#)
- [Fairview Park](#)
- [Peppermint Park](#)
- [Phillippi Park](#)
- [Shoshone Park](#)

Almost all the 'Bring your own Pickleball net' courts are very close to the fences. That is, the Pickleball court baseline is only 5.5 to 6 feet from the fence. The only exception is the court at Manitou which 9 feet from the fence. All the others are problematic for Pickleball. Baseline shots from the opposing team will most likely have to be played over as the fence is an obstacle.

Keep in mind when playing Pickleball on a dual use Tennis court, the height of the net should be adjusted. This is not always possible and impacts the true play of Pickleball.

Net Dimensions		
	Tennis	Pickleball
Length	42'	22'
Height at Posts	42"	36"
Height at Center	36"	34"

Pickleball Court Type Parks List

Dedicated Pickleball Courts

- [Hobble Creek Park](#)
- [Manitou Park](#)
- [Willow Lane Park](#)

Dual use Courts (Tennis Court Lined for Pickleball)

- [Baggley Park](#)
- [Boise Hills Park](#)
- [Castle Hills Park](#)
- [Cypress Park](#)
- [Helen B. Lowder Park](#)
- [Manitou Park](#)
- [Peppermint Park](#)
- [Terry Day Park](#)

Bring Your Own Pickleball Nets

- [Eagle Rock Park](#)
- [Fairview Park](#)
- [Hobble Creek Park](#) (Only for Boise City Sponsored Events)
- [Manitou Park](#)
- [Mountain View Park](#)
- [Optimist Youth Sports Complex](#)
- [Phillippi Park](#)
- [Shoshone Park](#)

Note: Pickleball courts at the parks in **red** are not suitable for play for the types indicated (i.e., dual use or bring your own nets). See Park photos.

Baggley Park

2 Tennis courts lined for dual use with Pickleball.





Boise Hills Park

1 Tennis court lined for dual use with Pickleball.

Note: There is a sign on the net to please not adjust for Pickleball.





Castle Hills Park

2 Tennis courts lined for dual use with Pickleball.





Cypress Park

1 Tennis court also lined for dual use with Pickleball.



Eagle Rock Park

2 Tennis courts

- 1 court is lined for bring your own Pickleball nets. (2 Pickleball courts)

Note: The base lines for the Pickleball courts are 5.5 and 6 feet from the fence.

On Thursday, July 21, the Boise Parks and Recreation Commission considered proposals for a potential court conversion at Eagle Rock Park. The decision was as follows:

- Create a hybrid court scenario with one court dedicated to tennis with the on-site backboard, and the other court converted to two dedicated pickleball courts (tennis and pickleball play areas will be separated by a net)

Boise Parks and Recreation staff will now begin the planning process to convert one of the tennis courts at Eagle Rock Park into two dedicated pickleball courts. A timeline for this conversion has not been determined.





Fairview Park

2 Tennis courts

- 1 court is lined for bring your own Pickleball nets. (2 Pickleball courts)

Note: There is a small crack at the end of one court. The base lines for the Pickleball courts are 5.5 and 6 feet from the fence.

A locked portable Pickleball net is on the court. I was told there is a sign with a phone number to call to get the net unlocked. I do not have a photo of the sign.





Helen B. Lowder Park

2 Tennis courts lined for dual use with Pickleball.





Hobble Creek Park

12 Dedicated Pickleball Courts

2 Tennis Courts re lined for bring your own Pickleball nets. That's equates to 4 Pickleball courts.

However, on July 14, 2022, Kerri Porritt sent an email to the Boise Pickle Club as follows:

“Can you please share with your members that the tennis courts at Hobble Creek are for tennis. Any other approved play on those courts will only be available through Boise Parks and Recreation sponsored events.”





Manitou Park

4 Dedicated Pickleball courts

2 Tennis courts

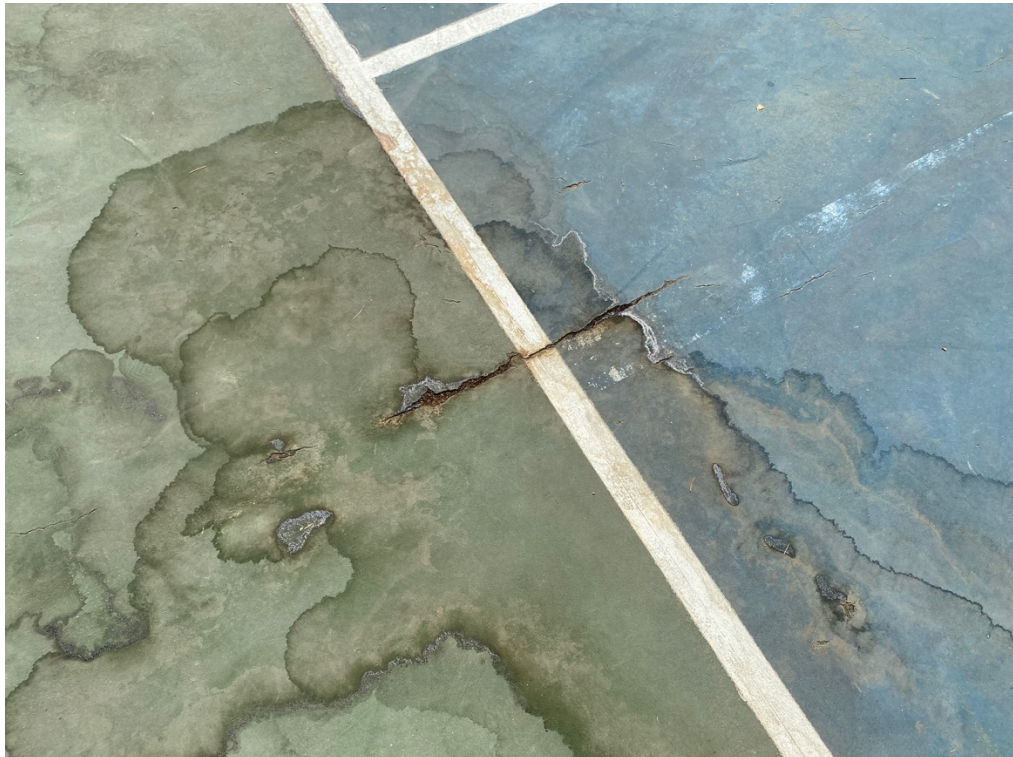
- 1 court is lined for bring your own pickleball nets (2 pickleball courts)
- 1 court is lined for dual use with Pickleball

Note: The Boise Pickleball Club has two portable nets locked to the fence. These nets are usually unlocked during the day and available for all to use. Only a select few club members have the lock combination for security.









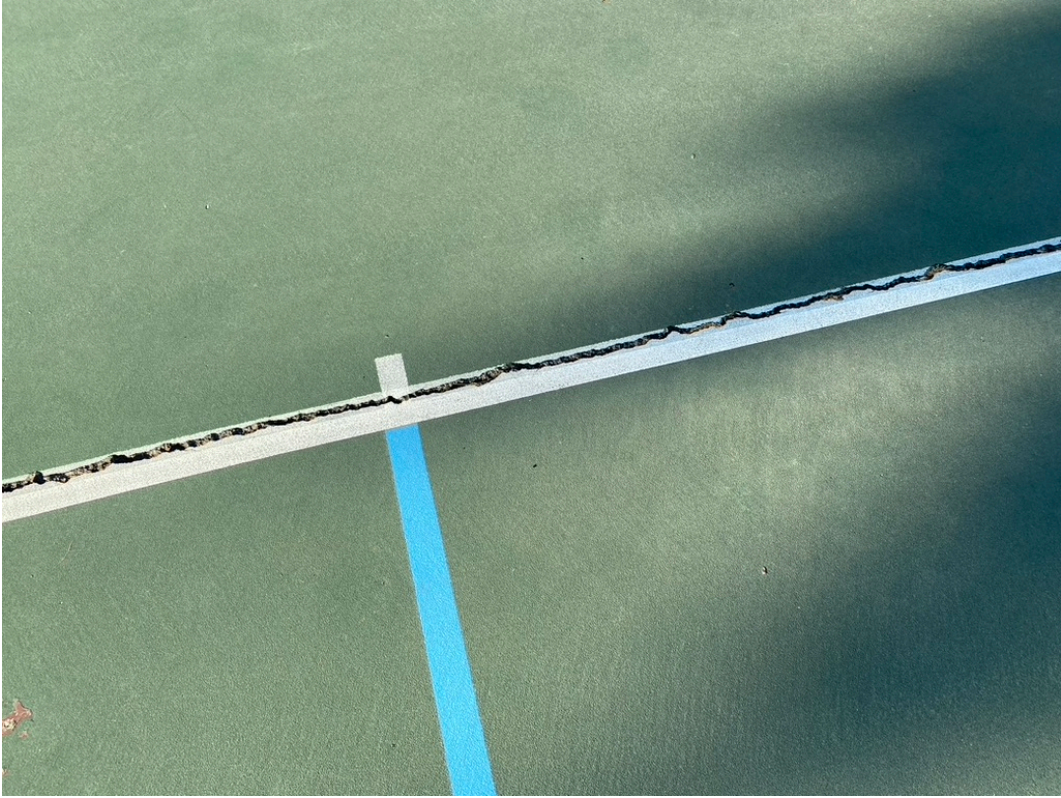
Mountain View Park

2 Tennis courts

- 1 court is lined for bring your own Pickleball nets. (2 Pickleball courts)

Note: Lots of big cracks in the courts. They are not suitable for play. Note: The base lines for the Pickleball courts are 5.5 from the fence.







Optimist Youth Sports Complex

1 Tennis court lined for bring your own Pickleball nets. (2 Pickleball courts)

Note: The base lines for the Pickleball courts are 5.5 feet from the fence.





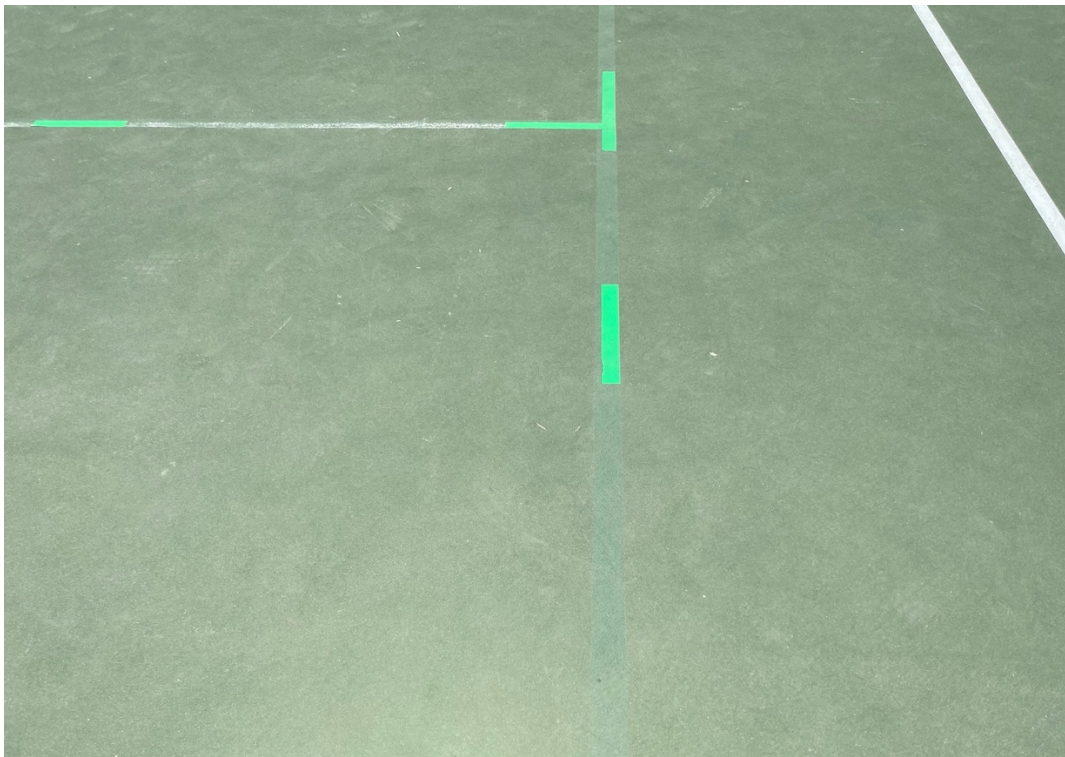
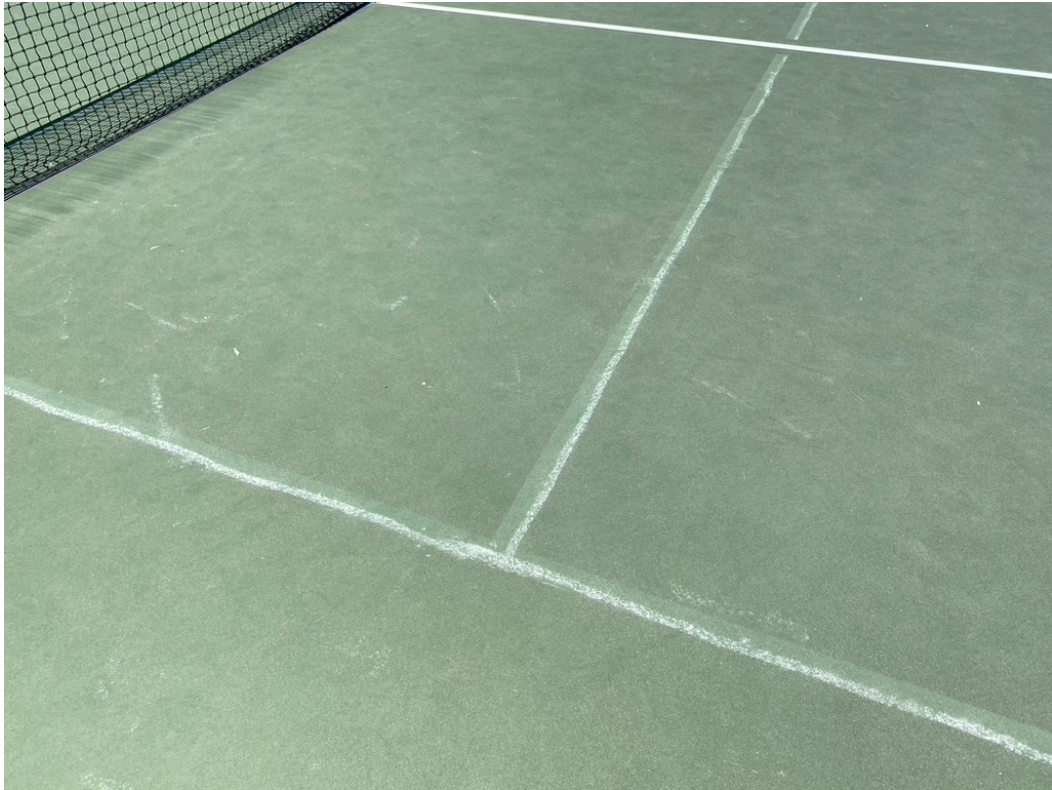
Peppermint Park

2 tennis courts lined for dual use with Pickleball.

Note: The Pickleball lines are very faded and difficult to see. Tape has been added along with some white markings or chalk. Not suitable for play.







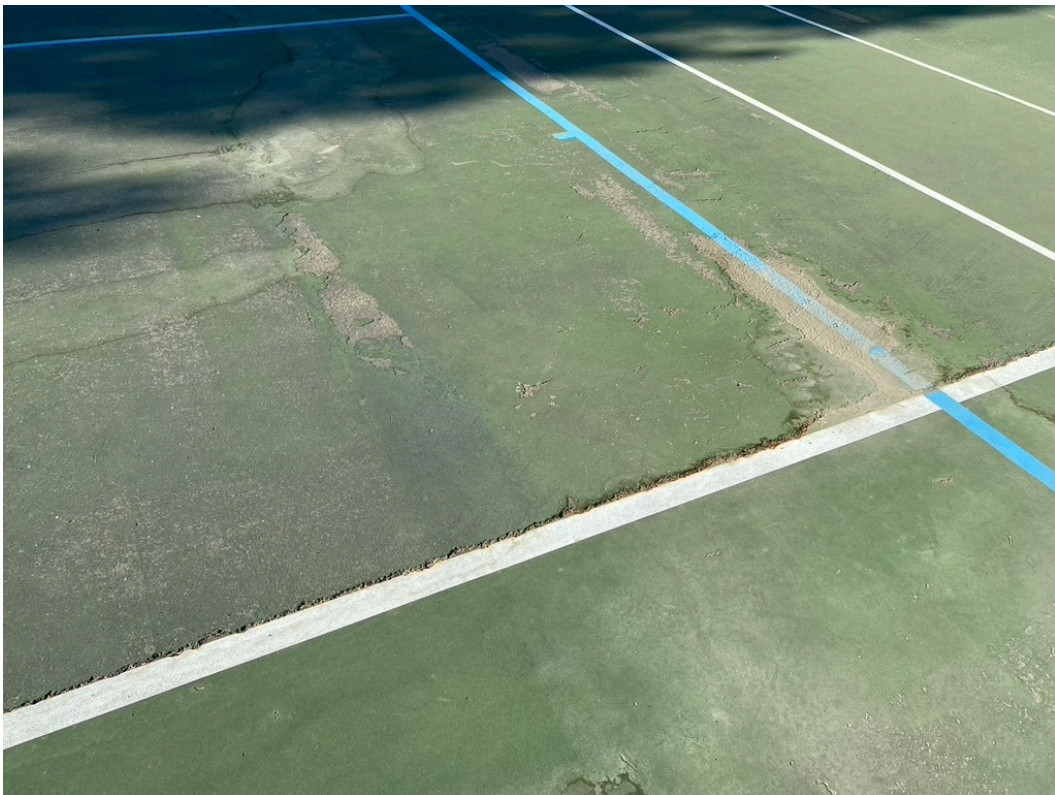
Phillippi Park

1 Tennis court

- Lined for bring your own Pickleball nets. (2 Pickleball courts)

Note: The courts are not in good shape. Cracks and other imperfections. The base lines for the Pickleball courts are 6 feet from the fence.









Shoshone Park

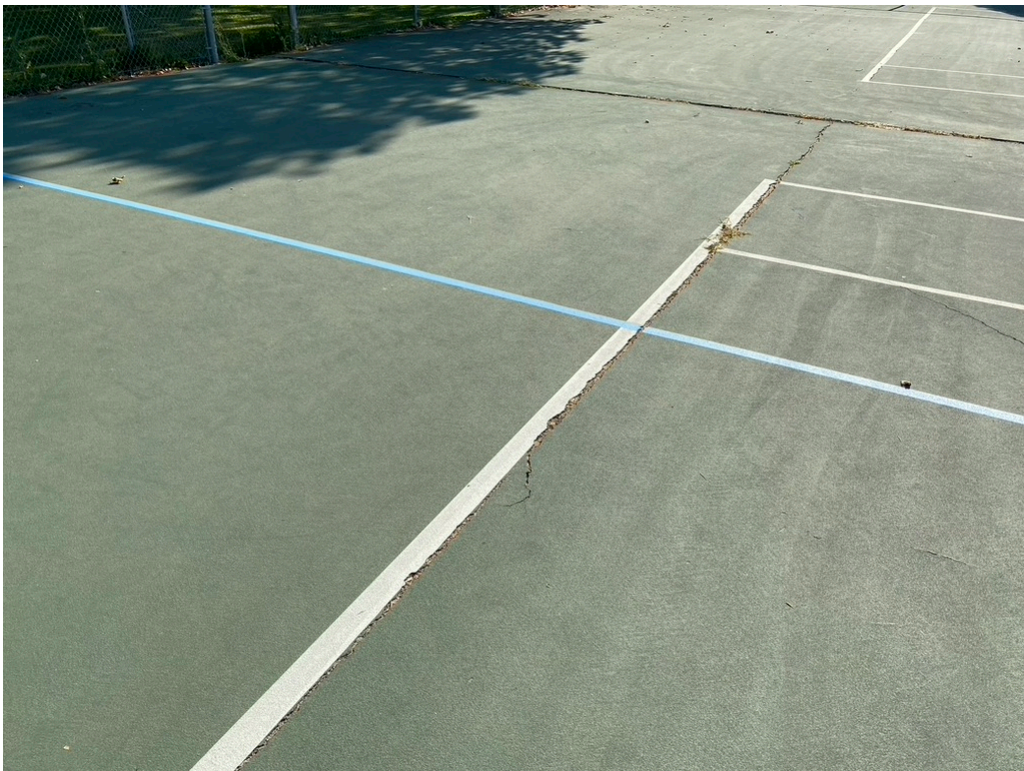
2 Tennis courts

- 1 court is lined for bring your own Pickleball nets. (2 Pickleball courts)

Note: The courts are not in good shape due to cracks. The baselines of the Pickleball courts are 5.5 feet from the fence.









Terry Day Park

2 Tennis courts lined for dual use with Pickleball.

Note: Someone tried to paint part of the Pickleball lined and did a bad job.





Willow Lane Park

6 Dedicated Pickleball Courts

The two middle courts have a very slight uneven surface where cracks were repaired.



